

**Sample Paper**  
**Half Yearly Examination- 2025-26**  
**Class 6**  
**Science**

Time: 3Hr

MM: 80

**General Instructions:**

- All Questions are compulsory
- There are 39 Questions in the Question Paper
- Section A – each question carries 1 mark
- Section B– Each question carries 2 marks
- Section C – Each Question carries 3 marks
- Section D– Each Question carries 5 marks
- Section E consists of Case Study Questions - Each question carries 4 marks

**Section A**

Q1) Name one process by which carbon dioxide is removed from the atmosphere.

- (a) Respiration (b) Photosynthesis (c) Transpiration (d) Conduction

Q2) The method that is used to separate water particles from clothes while drying in a washing machine is

- (a) magnetic separation (b) evaporation (c) filtration (d) centrifugation

Q3) Identify the two animals active at night.

- (a) Cockroach (b) giraffe (c) parrot (d) butterfly

Q4) When muddy water is passed through a filter paper, the mud that remains on the filter paper is called:

- (a) Sediment (b) filtrate (c) suspension (d) residue

Q5) The part of a plant that bends towards light and also transports water, minerals and food is

- (a) Flower (b) Roots (c) Stem (d) Leaf

Q6) We are able to see the objects around us because

- (a) The objects absorb light  
(b) The light reflected from our eyes reach the objects  
(c) The light reflected from objects reaches our eyes  
(d) The objects are transparent.

Q7) While playing hide and seek Phanish hides behind a dressing mirror. His friend Anuj tries to locate him. Which among the following is correct with respect to the above situation

- (a) Anuj is able to see Phanish as mirror is transparent
- (b) Anuj is not able to see Phanish as mirror is opaque
- (c) Anuj is able to guess that Anuj is behind the mirror as mirror is translucent
- (d) Anuj is able to see the image of Phanish in the mirror

Q8) A plant used for preparing medicines is

- (a) Eucalyptus (b) Rubber (c) Cotton (d) Jasmine

Q9) In the morning when the sun rises in the east , our shadow will be seen in \_\_\_\_\_ direction

- (a) East (b) West (c) North (d) South

Q10) Which among the following is a frugivorous animal

- (a) Lizard (b) Head louse (c) Bacteria (d) Parrot

Q11) Correct the following statement by changing the underlined word:

Oil can be separated from water by decantation

Q12) Standard unit of mass is \_\_\_\_\_

- (a) Gram (b) Kilogram (c) milligram (d) Quintal

Q13) Gas that are insoluble in water are

- (a) Oxygen (b) Carbon dioxide (c) nitrogen (d) helium

Q14) Motion of a swinging pendulum is

- (a) curvilinear motion (b) rotatory motion (c) oscillatory motion (d) rectilinear motion

Q15) Binomial plants live for

- (a) One year (b) Two Years (c) Three years (d) Many years

Q16) The part of the plant where the leaf is attached to the stem is called

- (a) Internode (b) Bark (c) Spine (d) Node

Q17) Choose the correct option

Statement 1: Cotton ball first floats on water but after sometime sinks to the bottom

Statement 2: Air trapped in cotton helps it to float. When air spaces are filled with water cotton sinks

- (a) Both statement 1 and 2 are true
- (b) Statement 1 is true but statement 2 is false
- (c) Statement 1 is false but statement 2 is true
- (d) Both statement 1 and 2 are false

Q18) Choose the correct option

Statement 1: Force is a push or pull

Statement 2: Force applied will always result in motion of an object.

- (a) Both statement 1 and 2 are true

- (b) Statement 1 is true but statement 2 is false
- (c) Statement 1 is false but statement 2 is true
- (d) Both statement 1 and 2 are false

Q19) Statement 1: Size of a shadow is same as the size of the object

Statement 2: Size of the shadow depends on the position of the opaque object with respect to the source of light

- (a) Both Statement 1 and 2 are true
- (b) Statement 1 is true but Statement 2 is false
- (c) Statement 1 is false but Statement 2 is true
- (d) Both Statement 1 and 2 are false

Q20) Statement 1: Soil is a mixture

Statement 2: Soil contains more than one type of substances in it.

- (a) Both Statement 1 and 2 are true
- (b) Statement 1 is true but Statement 2 is false
- (c) Statement 1 is false but Statement 2 is true
- (d) Both Statement 1 and 2 are false

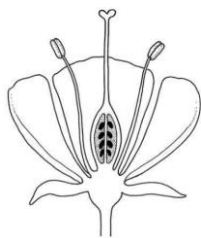
### Section B

Q 21 )State one difference between Scavengers and Decomposers. Give an example of each

Q22) Design an activity to show the measurement of a curved line using meter scale.

Q23) Observe and draw the diagram given below. Identify and label the following parts only-

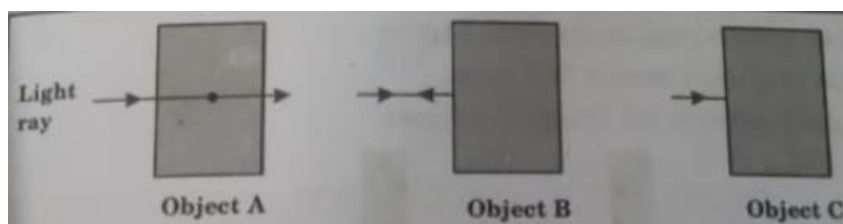
- (a) The part of the flower that provides protection to the bud before it blooms
- (b) The part of the flower that attracts insects for pollination



Q24) “Butter is separated from cream by churning it.”Name and explain the technique used in this process.

Q25) Draw a neat and labelled diagram showing parts of a leaf.

Q26) Observe the following figure and answer the questions that follow.



- (a) (i) Which object A, B or C reflects the light best?  
(ii) Which object A, B or C transmits the light best?  
(b) State two difference between image and shadow.

### Section C

Q27) With the help of a well labelled diagram show the separation of a mixture containing ammonium chloride and salt.

Q28) Compare living and non living things on the basis of following characteristics:

- (a) Life span  
(b) Nutrition  
(c) Reproduction

Q29) Describe an activity to show that clear water is transparent liquid

Q 30)(a) State one difference between tap root and fibrous root system.

(b) Identify the part of the plant modified in the following :

S.No	Modification	Part modified	Role of modified part
1	Turnip bulbs	A	B
2	Tendrils of grapes	C	D

Q31) State the type of motion in the following situations and mention whether it is periodic or non-periodic.

- (a) Motion of bullet fired from a gun  
(b) Motion of a bicycle while taking a turn  
(c) Flapping of birds wings

Q32) Give reasons

- (a) Sugar diffuses slowly into water  
(b) We can see through glass window panes but not through the walls of the house  
(c) Mustard oil forms a layer over water.

Q33) State the underlying principle of Pinhole Camera. List 2 characteristics of image formed by pinhole camera.

### Section D

Q34) Write five precautions to be followed when a meter scale is being used to measure a given length. Also draw relevant diagrams.

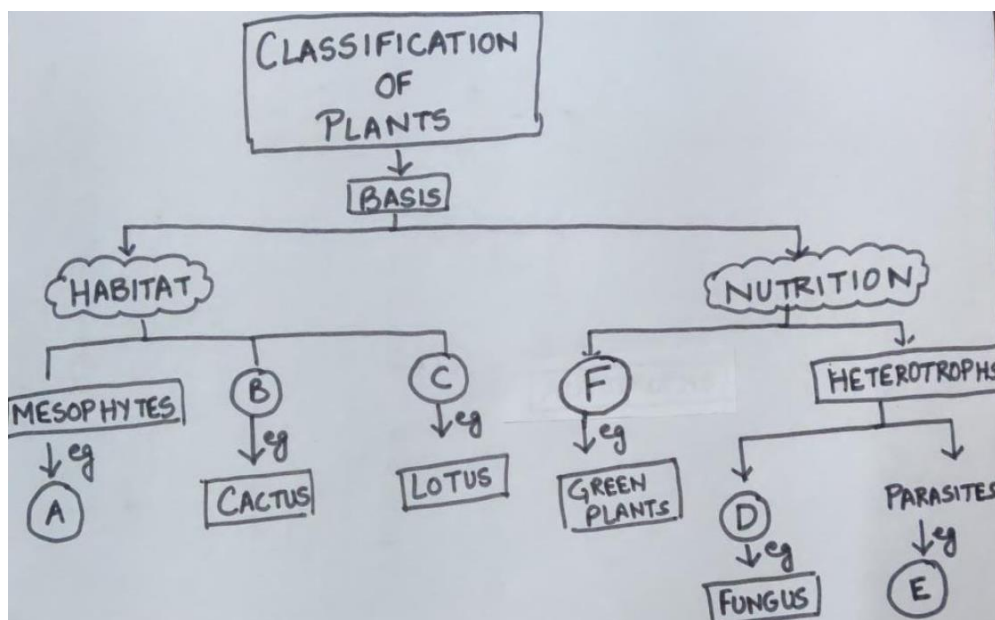
Q35) (a) Identify the state of matter that has a fixed volume but not a fixed shape. Draw a diagram to show the arrangement of molecules in this state of matter

(b) Define the term “Solubility”

(c) State one method by which we can

- (i) Increase the solubility of solids in liquids  
(ii) Increase the solubility of gases in liquids

Q36) Complete the following web chart by identifying A,B,C,D,E,F



(c) State two functions of seed.

### Section E

Q37) Advancement in technology has led to an improvement in our lifestyle and has also changed our attitude. When human population was low little amount of solid waste was generated and was easily degraded in the natural environment. Significant increase in the human population and availability of new technologies have led to increase in addition of waste to our surroundings. Proper disposal of waste is essential to make our earth a better place to live in.

(a) How can we dispose the solid waste in an environment friendly way?

(b) Identify non-biodegradable waste materials among the following

Jute rope , Plastic bottle, Cotton fibres , Cardboard sheets, thermocol sheets

(c) State the method that is used for disposing biodegradable waste. What is the advantage of this technique.

Q38) Anvesha is a student of class 6. She has collected certain materials like sand, pebbles, steel clips, water, lemon juice and salt. She adds lemon juice to water and gets a clear solution. When she adds sand and pebbles to water a solution is formed but sand and pebbles later settle down. She observes the 2 solutions and identifies the nature of the mixture formed in each case.

(a) State the type of mixture formed when lemon juice is mixed in water

(b) Identify one article mentioned in the list of articles given above which shows similar properties as mixture formed in (a)

(c) How is the mixture formed by sand and water different from the mixture formed by lemon juice in water (state 2 differences )

Q39) Amita took a few gram seeds and sowed them in soil. She noticed that after a few days small plants were formed which later started growing bigger in size.

- (a) State the term used for the baby plant formed after germination of the seed
- (b) Name two processes that are necessary in the journey of formation of seeds.
- (c) List two functions of seeds.